

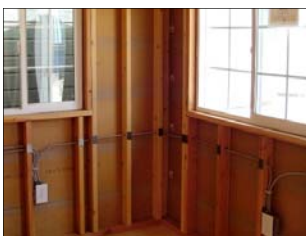
We can add Electrical

...to your *Shed Shop* building.

We are a
"General" Contractor
AND a licensed
"Electrical" Contractor



Typical Panel Upgrade



www.shedshop.com
37341 Blacow Rd., Fremont, CA
(510) 791-7433
M-F 9-5 Sat. 10-4

Light-Duty Package

Recommended when all you need is a light and one outlet for occasional use.

Package includes...

- One fluorescent ceiling light fixture
- Light switch & dual outlet mounted side by side in a dual box.
- Circuit is GFCI protected

Price: \$475

Normal-Duty Package

Recommended when your shed will be used as a workshop, studio, or backyard office.

Package includes...

- One ceiling light fixture
- One exterior motion light
- Two light switches
- Four Dual outlets
- Dedicated 20A circuit to service panel
- Circuit is GFCI protected

Price: \$1,155

(Buildings larger than 150 sq. ft. - \$1,245)

Connection Costs

Connecting shed to a live source involves the following items.

- **Elec. Permit Procurement..... \$400**
We get permit for you - our fee includes code research, create plot plan, obtain permit, and manage inspections
- **City/County permit fee..... cost varies**
- **Physical hook-up costs..... will quote**
(Depends on distance to source & ground surface)

Options and Add-Ons

- Extra light fixtures
- Extra outlets
- Extra circuits
- Cable TV and Internet connection
- Sound system wiring
- Sub-panels

Panel Upgrade

We can also replace your old sub-standard low-capacity electrical panel... ask for details.

Contractor's Lic. No. 819384

Limitations: Electrical services offered may be limited or restricted by your local Building Department .