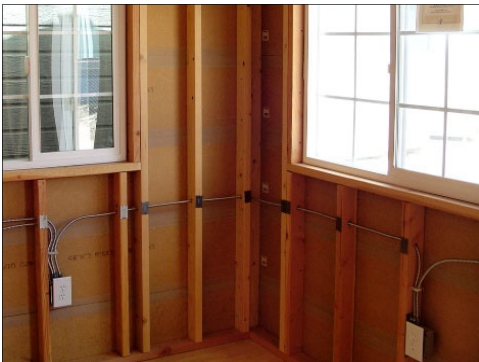


We can add Electrical

...to your *Shed Shop* shed.



Electrical Package

Package includes...

- One 4 ft. LED ceiling strip light
- One exterior motion light
- Two light switches
- Four dual outlets
- New 20A breaker at service panel (included only if electrical connection is also ordered)
- Circuit is GFCI protected

Price: \$1,570 (up to 120 sq. ft.)

Price: \$2,025 (over 120 sq. ft.)

(same package as above except two extra ceiling lights and six dual outlets)

***Additional connection costs apply.
See below**

Connection to Electrical Source

Connecting to an elec. source involves these items.

- **Project Management**
We get permit for you - includes code research, plot plan, obtain permit, & manage inspections
- **City/County permit**
- **Physical hook-up from building to home electrical panel**

Pricing on the above options vary. Ask us for details!

Options and Add-Ons

- Extra light fixtures, outlets, circuits
- Cable TV and Internet connection
- 220V service to shed
- Sub-panels

We are a
"General" Contractor
AND a licensed
"Electrical" Contractor

the **shedshop**
The Bay Area Shed Leader

www.shedshop.com
3201 Diable Ave., Hayward, CA
(510) 791-7433
M-F 9-5 Sat. 10-4

Contractor's Lic. No. 1062810

Limitations: Electrical services offered may be limited or restricted by your local Building Department.